

botanical builders llc

Landscape Design & Construction Management

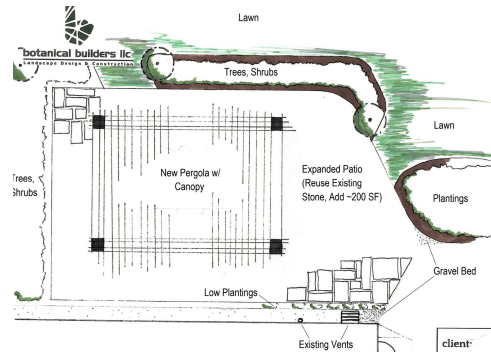
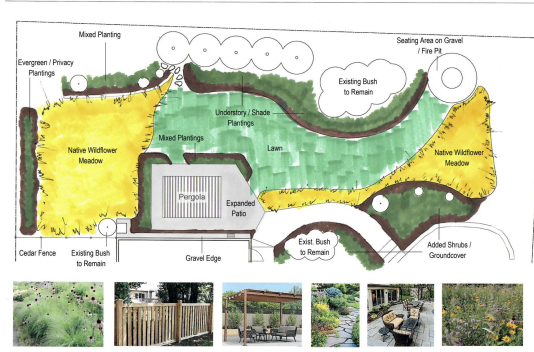


we believe

- in being a partner to bring your vision to life every step of the way—while maximizing and respecting your budget
- in transparency throughout the process with communication that's been polished over +12 years in the design and construction industry, rooted in our background of landscape architecture
- in starting with plants and materials native to region and respectful to the site the as the basis of design, and incorporating your concept from there

the process

- phase 1: design & preconstruction
 - design program & survey
 - concept development
 - design development, permitting & budget presentation
 - value engineering and areas for cost savings
 - construction documents and detailing

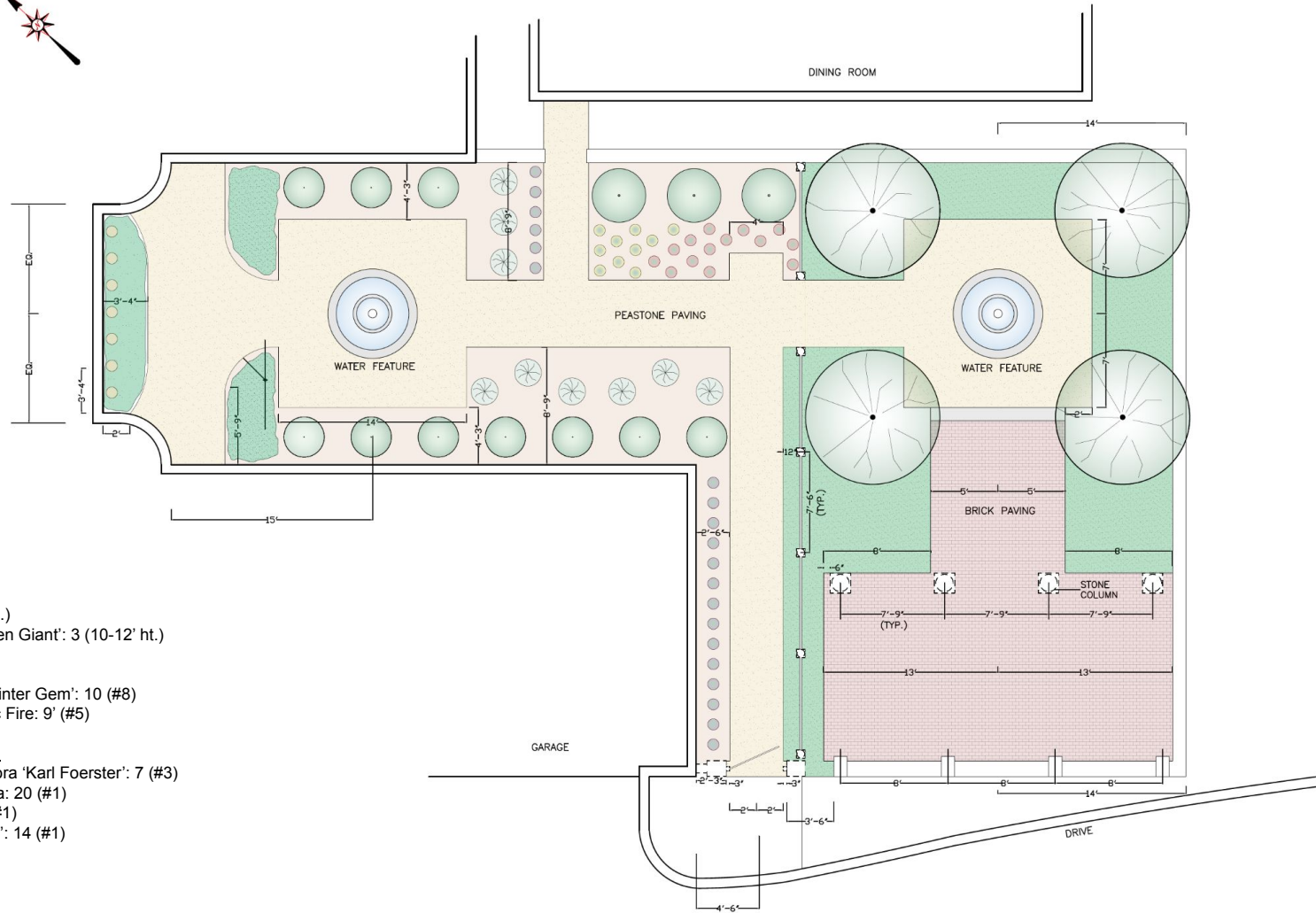


Example timeline

1. **Layout & Design Development** revisions/approval: 3-4 weeks
2. **Final Estimate & Pricing:** 2-4 weeks from concept approval (depending on specialty products or subcontractors)
3. **Procurement & Installation:** 3 weeks to procure all non-custom planters and another 2-3 weeks for installation. Planters in to order are typically 4-6 weeks lead time.

Conceptual budget - includes estimated material and installation

- **Planters:** \$8,450.00
 - 6 circular/eggplant planters 27"x24" (height)
 - 3 circular/eggplant planter (24"x20" height)
 - 7 rectangular planters (48" L x 15" W x 24" height)
 - a. Lined with a drainage mat and filter fabric
- **Soil:** \$3,400.00
 - Lightweight growing media designed for rooftop use
- **Irrigation & Lighting:** \$6,950.00
 - Uplighting of trees and drip irrigation on a controller
- **Plants:** \$8,200.00
 - Mix of evergreen shrubs for hedges, 5-6 larger trees (with tie-down harnesses for wind resistance), hydrangeas, and liri for rooftop climate
- **Mulch:** \$800
 - 3" of hardwood shredded mulch in each planter
- **Debris removal & freight:** \$3,890.00
- **Subtotal:** \$31,650.00
- **Sales Tax & insurance included**

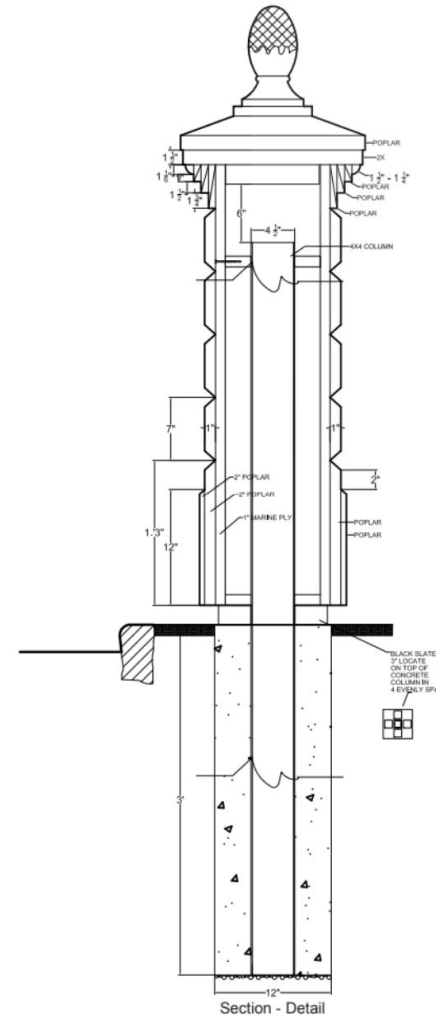
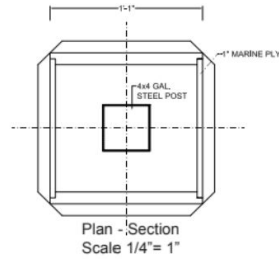
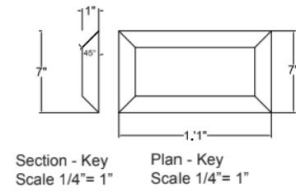
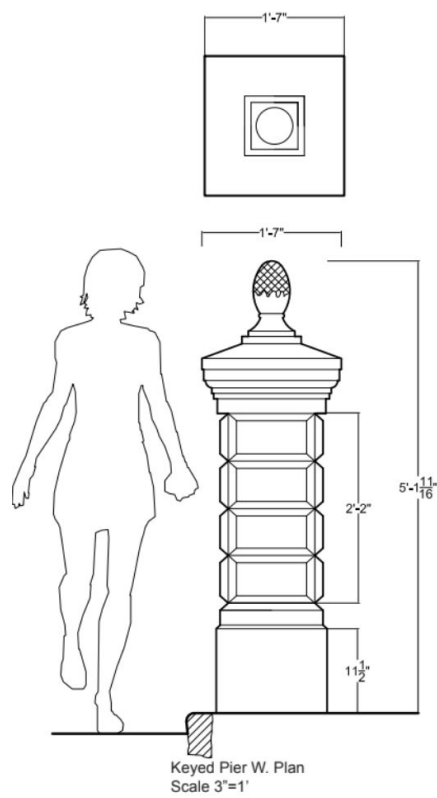


PLANT SCHEDULE

- Trees**
Acer rubrum: 4 (3" cal.)
Thuja arborvitae 'Green Giant': 3 (10-12' ht.)

- Shrubs**
Buxus microphylla 'Winter Gem': 10 (#8)
Cornus sericea 'Arctic Fire': 9' (#5)

- Perennials & Grasses**
Calamagrostis acutiflora 'Karl Foerster': 7 (#3)
Lavandula angustifolia: 20 (#1)
Rudbeckia hirta: 10 (#1)
Heuchera 'Coral Bells': 14 (#1)

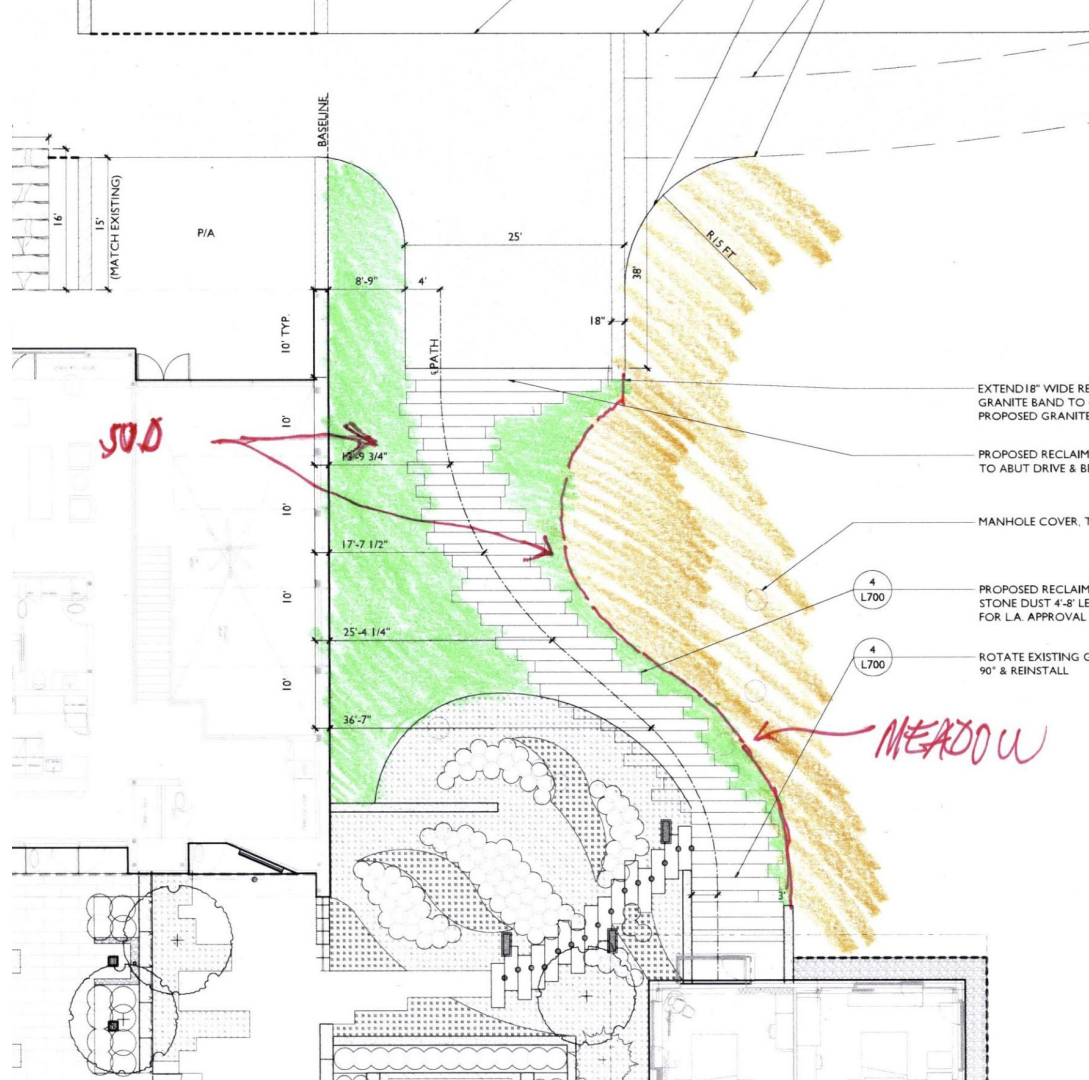


the process



- phase 1: design & preconstruction
 - design program & survey
 - concept development
 - design development, permitting & budget management
- phase 2: build
 - construction administration and/or installation oversight services
 - punch-list, close-out & warranty assistance









residential green roof installations











questions?

